



SLIGHTLY

SKEWED

Journal of the Glendale Woodturners Guild

Volume 25, Number 5 – May 2016

NEXT MEETING

May 15, 2016

Sunday May 15, 2016

2:00 p.m. Sharp

HOW TO FIND US

Crescenta Valley Regional Park
Recreation Center
Dunsmore & Honolulu, La Crescenta



Thomas Guide 534-E-1

SUNDAY MEETING

Meetings consist of announcements, a feature presentation, a Challenge, Show & Tell and a wood raffle.

May 15, 2016

Challenge: **Natural Edges**

Presentation: ??

by ??

President's Message

It was great to see so much Jewelry in the Challenge. Unfortunately the beginners decided not to participate. Maybe the concept of how to make jewelry on the lathe was too challenging for them. Hopefully they will do better with this month's Natural Edge Challenge. I firmly believe in the Monthly Challenge as a way for our members to improve and grow their abilities. If you never try something new, you will still improve but slower. Try something that you have never done and you will learn. Anything that you learn will influence future work and can improve your old "standard piece".



I am looking forward to the upcoming Burbank Creative Arts Exhibit. Those of you who are entering pieces need to bring them to our May meeting **WHICH WILL BE** May 15th due to Mother's Day being on the 2nd Sunday of the month.

You will need to bring your pieces to the meeting for collection. On a piece of paper make a numbered list of your pieces. Include the name of each piece, wood used and the selling price. Put the number that corresponds to each piece on a piece of masking tape on the bottom of each piece. Include your name and phone number on the list. Put the list in a box along with all your pieces safely packaged. Remember that the gallery will take a 25% commission on all sales.

We could still use a couple more people to act as Ambassadors at the opening. If you are interested, see me at the May meeting or give me a call.

Steve Cassidy is working on setting a date for a Binh Pho demo later in the summer. I am also working with Eli Avisera to set a date for his demo and possibly a 2-day class. More details on both demonstrators will be available at our May meeting.

In the meantime keep turning and learning.

Bill

PRESENTATION



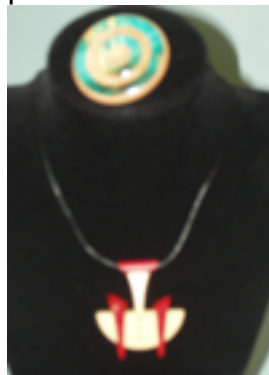
Scott Johnston gave a presentation on “Progression of Design”, using as examples his Challenge-winning carved bowl, as well as a turned and carved bottle with stopper. His mantras are: “what more can I do to this piece?” and “how can I push myself further?” He also introduced us to a new technical term, “fog” wood. (Found On Ground).

CHALLENGE

April’s Challenge was Jewelry. There were no entries in the Beginner level. **Ron Shaffer** took Intermediate honors - his entries were a selection of segmented bangles, and a pendant, (I’m not sure which of them won).



Carey Caires was the Advanced winner with a pendant.



Judges were **Kim Acuna, Deanna Hemphill and Scott Johnston**.

Other entries: **Steve Cassidy** had a pendant and matching earrings on a burl stand, bocote, finished with Briwax, and **Pete Carta**, walnut bangles finished with friction polish.



SHOW AND TELL

Bill Loitz submitted earrings with matching brooch, made from blackwood and gilder's wax, and **Klaus Schmitt** had a plethora of rings from yellowheart, purpleheart, cocobolo, ebony, maple, walnut and palm wood. Finish was acrylacq.



Earleen Ahrens had some necklaces made from colored pencils, and Scott Johnston a pair of picks from purple heart with ebony pearls.



Charlie Hulien had a candy dispenser, as well as some vases and goblets.



Fernando Vilchis had two bowls, one from maple with a natural edge, and another from elm (I guess with an un-natural edge?)



Ron Shaffer had a hollow form of carob, lacquer finish, and **Jim Givens** a segmented salad bowl from maple and walnut, walnut oil finish. (Question: how do you make a segmented salad?)



Klaus Schmitt offered an un-named item of walnut (looks suspiciously like a bowl to me!), and Carey Caires also two small, un-named, almost in focus items.



Rounding out the action were three bowls from **Steve Cassidy**: Eucalyptus with lacquer finish that went oval from fast drying, a flared edge from big leaf maple, and a round edge from birch, both finished with Briwax



Upcoming Events:

The Art of Woodturning show at the Creative Arts Center Gallery, 1100 West Clark Ave, Burbank. Presenting work by GWG members, it will run from June 3-23, with the opening reception on 6/3 from 7-9 pm. Volunteers are needed to help with the food, as well as act as “ambassadors”.

2016 CALENDAR

Meetings:

May 15 (3rd Sunday)

June 12

July 10

August 14

September 11

October 9

November 13

December 11 (auction and potluck)

2016 CHALLENGES

May- Natural Edges

June- Lidded Boxes

July- Multi-Axis

August- Hollow Forms, any size

September- Beads of Courage Boxes

October- Surface Decoration

November- Segmented or multi-layered

Finishing Thoughts

We have Anchor Seal available, see the librarian, Michael Baldino at meetings. The new price is \$13/gallon. We also need sturdy, screw top gallon jugs to put it in (milk jugs aren't sturdy enough).

Remember to show your membership card at *Rockler in Pasadena* to get a 10% discount on all non-sale items. Remind them to put a check mark in the book for us. We get \$20 gift cards from them that we use in our monthly wood raffle and end of year holiday auction.

As an aside, your newsletter editor has now become a YouTube less than phenomenon! A local production company wanted to do some videos of crafts people doing their thing, and I was the designated wood turner. Go to YouTube and search for “Super Deluxe woodworking”, and you’ll find a couple of videos. You can see me turn a bowl in less than a minute and a half, or if you suffer from insomnia, you can watch the extended cut.

CONTACTS

GWG mailing address:

Glendale Woodturners Guild
11001 Canby Avenue
Porter Ranch, Ca. 91326
GWG web site:

<http://www.woodturners.org>

President: Bill Loitz

(h) (626)797-1732

president@woodturners.org

Vice President: Steve Cassidy

(h)(323)420-3699

vp@woodturners.org

Treasure: Bob DeVoe

(h) (818) 507-9331

Secretary: Al Sobel

secretary@woodturners.org

(h) (818) 360-5437

Editor Newsletter: John Fisher

(h) (818) 341-0340

editor@woodturners.org

Librarian: Michael Baldino

(h) (818)389-2714

librarian@woodturners.org